

## **What type of Europe?**

The salience of polity and policy issues in EP elections

Daniela Braun, LMU Munich

Swen Hutter, European University Institute

Alena Kerscher, LMU Munich

### **Abstract**

How much and why do political parties emphasize Europe in election campaigns? The literature is increasingly focusing on two aspects of party issue competition: position and salience. However, recent studies on salience tend to ignore the fact that Europe is a compound political issue. This article contributes to the debate by highlighting the crucial difference between constitutive and policy-related European issues. Using data from the Euromanifestos Project for fourteen EU member states for the period 1979 to 2009, we first show that Europe is much more salient in EP elections than previously assumed. Second, EU issue salience depends on party position and party system polarization over European integration. However, different explanations come into play once we bring in the polity-vs.-policy distinction. This has important implications for our understanding of party competition on European integration.

## **Introduction: Disentangling European integration**

By now, it is no longer contested that European integration has become an object of public controversy in party politics. The politicization of Europe – to take up the term revitalized by Hooghe and Marks (2009) to capture this phenomenon – might vary over time and across countries, but it is here to stay and likely to shape the future course of integration. Moving beyond questions of whether and to what extent Europe has become politicized, current studies are starting to focus on the ‘differentiated’ forms such politicization takes (e.g. de Wilde et al., 2016; Hutter et al., 2016a; Risse, 2015). A recurring distinction is drawn between conflicts over constitutive and policy-related European issues. According to Bartolini (2005: 310), the former centre on fundamental features of the EU polity, i.e. membership, competencies, and decision-making rules. The latter, by contrast, refer to policy questions in fields where EU institutions are involved in daily policy-making.

As astute observers argue (Mair, 2000, 2007; Risse, 2010), debating the two types of European issue impacts the future of the EU and democracy in Europe in two different ways. In his influential work on integration and party competition, Mair’s (2000, 2007) hunch is that the EU’s institutional setting favours conflicts over constitutive topics, which ultimately undermines the system’s legitimacy because most controversies take the form of principled support vs. principled opposition. He suggests that a mechanism to avoid more conflict over the fundamentals of the EU polity is a division of labour between national and European elections. The European Parliament (EP) has become co-responsible for policy decisions at the EU level, but it plays a less pivotal role in treaty reforms or the accession of new member states. Thus, Mair advocates that EP elections should become *the* arena for contesting European policies, whereas national elections should centre on constitutive issues. Similarly, Risse (2010) concludes his book ‘A Community of Europeans?’ with a strong call for more debates over which EU policies are preferable. In his opinion, “politicizing European policies

is likely to lead to transnational disputes and, thus, to further create a European community of communication” (Risse, 2010: 251).

This article presents the first systematic large-N longitudinal study on the salience of these two essential types of European issue. Despite strong theoretical claims, such a study is still lacking. Following Mair’s argument, we start to disentangle ‘Europe’ in the context of EP elections. Thus, our main research questions are as follows: *How salient are constitutive and policy-related European issues in EP elections? Do the conditions differ under which the two types of issue are salient?* By taking issue salience, a key component of politicization (Green-Pedersen, 2012), as our dependent variable, we contribute to a growing body of literature on the salience of Europe in party competition (e.g. Adam and Maier, 2011; de Vries and van de Wardt, 2011; Guinaudeau and Persico, 2013; Netjes and Binnema, 2007; Pennings, 2006; Spoon, 2012; Kriesi, 2007; Steenbergen and Scott, 2004; Whitefield and Rohrschneider, 2015; Hoeglinger, 2016). This literature has not yet systematically incorporated the distinction between the two types of issue. Moreover, our general knowledge about the salience of Europe in EP elections is still fairly limited. In the most thorough study to date, Spoon (2012) shows that – in contrast to predictions of the ‘second order election’ thesis (Reif and Schmitt, 1980; Schmitt, 2005) – parties devote a significant part of their EP election manifestos to European issues. However, her work shares the limitation of other studies in the field as it only focuses on constitutive aspects of integration.

We argue that taking into account the ‘polity-vs.-policy’ distinction affects the answers to both *how* salient Europe is in EP elections (even more salient than previously assumed) and *why* certain parties are more likely to emphasize it. More specifically, we focus on the effects of two party-level factors (i.e., positions on and intra-party dissent over European integration), and polarization over the issue in the party system. The standard expectations are that Euro-critical and united parties have the most to gain from emphasizing Europe and that its

systemic salience increases with the polarization in the party system as a whole. These expectations are based on the idea that Europe is a ‘wedge issue’ (van de Wardt et al., 2014). That is, orientations towards Europe cut across the traditional left-right divide (e.g. Hooghe et al., 2002; Kriesi et al., 2006; 2008). This offers an opportunity for challengers to mobilize against the pro-European consensus in the party system and to produce severe intra-party conflict within mainstream parties (e.g. Hobolt and de Vries, 2015; de Vries and Hobolt, 2012). However, as we argue in this article, this might only be the case for constitutive EU issues. By contrast, positions on policy-related EU issues are usually embedded in the left-right conflict (e.g. Hix et al., 2007). Taking this into account opens up a different perspective on the dynamics of EU issue competition as parties not only face the trade-off between emphasizing European or national issues but they can also shift attention to policy-related European topics.

To test our expectations, we use the new integrated data set from the Euromanifestos Project for 14 EU member states and the period 1979 to 2009 (see Braun et al., 2015). As the coding scheme of this project is adapted to EP elections, the data offer an ample basis for studying the compound nature of European issues. Altogether, we study 401 Euromanifestos and explore the determinants of the salience of the two types of EU issues both separately and in combination, employing regression analysis with a Prais-Winsten transformation technique. Overall, our findings show that a differentiated conceptualization of EU issues has important implications for the understanding of party competition in EP elections. Europe is much more salient and different explanatory factors come into play once we bring in the polity-vs.-policy distinction. Most importantly, constitutive issues are emphasized by Euro-critical parties, while policy issues are put on the agenda by Euro-friendly parties and in less polarized contexts.

The paper is structured as follows. First, we briefly discuss how previous studies have measured the salience of Europe and its sub-issues. Next, we formulate expectations about the general salience of conflicts over constitutive and policy issues in EP elections, before we develop our hypotheses on the conditions under which the two types of issues are emphasized. After that, we discuss our data and methods and then present the empirical results.

## **The salience of Europe: Emphasizing what and why?**

### *The ‘what’: EU polity and policy contestation*

Scholars of EU politics increasingly put the spotlight on the salience of Europe in party competition. Although they focus on different arenas and rely on various data sources, such as expert surveys (e.g. de Vries and van de Wardt, 2011; Steenbergen and Scott, 2004; Whitefield and Rohrschneider, 2015), media coverage (e.g. Kriesi, 2007; Helbling and Tresch, 2011) or party manifestos (e.g. Popa and Dumitrescu, 2015; Spoon, 2012), they treat European integration as a single political issue. That is, they do not differentiate between particular aspects or types of European issues. More specifically, the literature tends to focus on the ‘constitutive’ side of integration. This is most obvious in Spoon’s (2012) analysis of Euromanifestos – which comes closest to the study we present here. Spoon looks at the percentage of a party manifesto devoted to EU issues by relying on the so-called EUSUM variable, which includes “items such as favourable mentions of the EC/EU, competencies of various European institutions, and mentions of a European way of life.” The media-based study by Kriesi (2007) also focuses on a single category: statements on “European integration (including enlargement) or EU membership”. In the case of expert surveys, it is not so easy to tell. However, the phrasing of the question<sup>1</sup> is most likely to evoke judgement of the relative

---

<sup>1</sup> In the Chapel Hill Survey, experts are asked to rate the “relative importance of European integration in the party’s public stance” on a five-point scale, ranging from “no importance, never mentioned” to “most important issue for the party” (Bakker et al., 2012).

importance of European integration regarding its constitutive elements, or very general statements related to integration rather than regarding daily policy-making.

At the same time, we know from more exploratory research that parties address European policies in their programmatic statements as well. In an early automated content analysis of national election manifestos, Pennings (2006), for example, shows that although the share of co-mentions of twenty policy areas and European integration is relatively low, there are pronounced party- and time-differences.<sup>2</sup> Similarly, Guinaudeau and Persico (2013) highlight that the specific European issues addressed vary greatly between election manifestos. Based on a qualitative reading of British, French and German manifestos, they identify sixty-nine issue categories (ranging from very specific policy proposals to general integration-related statements). On average, 8.7 percent of the content of the manifestos issued in the period 1986 to 2009 was devoted to EU issues. Furthermore, roughly 60 percent of these contents referred to specific EU policies (own calculation). Two other recent studies have also taken up the ‘policy’ vs. ‘polity’ distinction. For the case of Austria, Senninger and Wagner (2015) show that parties addressed European issues in about nine percent of their press releases during national election campaigns in 2008 and 2013. Most importantly, all parties addressed EU policies to a fairly large extent (the two mainstream parties in government talked about such issues in more than 50 percent of their press releases). Based on a larger sample of 61 national elections in six West European countries, Hutter et al. (2016b) find that, on average, EU policies account for around two percent of all party statements reported in the media (the average salience of all European issues is 6.6 percent). They show that, in relative terms, policy issues are less salient than constitutive issues in all the countries (the differences are smaller in EU member states compared to the non-EU member Switzerland).

---

<sup>2</sup> Pennings (2006) finds that fewer than ten percent of the explicit co-mentions per policy domain refer to European integration. However, as he notes, the automated procedure is rather restrictive, which might have led to underestimation of the degree of Europeanization in national party manifestos.

To sum up, we can draw three conclusions from this exploratory work. *First*, even in the case of national elections, we lose a significant share of EU-related party contestation if we do not consider policy issues. In other words, the studies support our general point that political parties not only face a trade-off between talking about Europe or national issues in election campaigns but by contrast they also face the choice of talking about different types of European issues. *Second*, it seems that EU policies are more salient in direct party communication (i.e. in manifestos or press releases) than in mass media-filtered communication. *Finally*, the extent to which EU policies are addressed varies across countries and parties – although we lack more systematic evidence on this point given the rather limited samples covered by the studies cited.

What do we expect regarding the salience of Europe in EP elections based on this evidence? First of all, we assume that policy-related topics make up a significant portion of all European issues, given that we focus on (a) direct party communication by means of election manifestos and (b) EP elections, which have become ever more important in EU policy-making over time. To put it differently, where if not in Euromanifestos should domestic parties discuss the way Europe intervenes in daily policy-making? As a consequence, we expect that the overall salience of Europe in party competition in EP elections is much higher than has been shown by previous studies (Fazekas et al., 2015; Spoon, 2012). It might not seem surprising that parties choose to focus on European issues in general and EU policies in particular in their Euromanifestos. However, note that our predictions contrast with ones that regard EP elections as (still) second-order elections fought in the shadow of national political conflicts and issues (Reif and Schmitt, 1980; Schmitt, 2005).

*The ‘why’: EU positions, intra-party dissent and polarization*

Inspired by the work of Schattschneider (1960), theories on the dynamics of issue competition have posited that political parties will focus on different issues in a way that benefits them electorally. As Carmines (1991: 75) aptly puts it, “All successful politicians instinctively understand which issues benefit them and their party and which do not.” A major claim in this literature is that parties emphasize issues on which they hold distinct and strong positions which offer them an advantage over their competitors (for a recent formulation, see Hobolt and de Vries, 2015; de Vries and Hobolt, 2012). Translated to European issues, most contributions to the debate expect political parties to profit the most from emphasizing Europe in their discourse if they have (i) a clear Euro-critical position and (ii) face no major intra-party dissent over Europe (e.g. de Vries and van de Wardt, 2011; Steenbergen and Scott, 2004; Kriesi, 2007; Whitefield and Rohrschneider, 2015; Spoon, 2012). By challenging the pro-European consensus of mainstream parties and the political elite more generally, Euro-critical parties are seen as the strongest force driving the salience of Europe in party politics. The dominant role of Eurosceptics in integration conflicts is explained not the least by the fact that European issues cut across the traditional left-right dimension (e.g. Hooghe et al., 2002; Kriesi et al., 2006; 2008), thus producing severe intra-party conflict within mainstream parties (e.g. Franklin et al., 1996). For this reason, mainstream parties are expected to dismiss such issues with the aim of neutralizing internal conflicts.

These expectations reflect the state of the art in the literature. However, as we said in the introduction, they were mainly developed and tested in relation to struggles over Europe in general and over its constitutive aspects in particular. Given parties’ general positioning on the further integration of Europe, these issues can be characterized as ‘wedge issues’ (van de Wardt et al., 2014), with all the potential to restructure political competition. However, conflicts over policy-related European issues do not necessarily follow the same logic because parties’ positions on these issues usually do not cross but are instead embedded in the dominant left-right divide (Hix et al., 2007). Therefore, debating policy-related European



issues does not tend to pose the same threat to the internal cohesion of mainstream parties and can more easily be accommodated by them. As Börzel and Risse (2009: 219) argue, “European mass integration parties of the centre-left and centre-right could actually profit from politicization, the more Europeans stop fighting over the European *finalité politique* and start debating what kind of European policies they would prefer” (see also Risse, 2010: 249-252). This reasoning implies that, especially in the context of EP elections, pro-European and internally divided political parties should attempt to shift attention away from constitutive debates over the further deepening and widening of Europe. However, this de-emphasizing strategy should not come at the expense of talking about Europe altogether. Instead, we expect that parties will emphasize European policies in their manifestos. That is, they will elaborate on how the EU should make use of its competencies in daily policy-making – for example, by adapting EU regulations to stimulate economic growth or tightening EU rules to protect the environment. To sum up, we formulate the following two sets of party-level hypotheses:

#### *Party positions on European integration*

(H1a) The *more* Euro-critical parties are, the *more* they will emphasize *constitutive* European issues in their EP election manifestos.

(H1b) The *less* Euro-critical parties are, the *more* they will emphasize *policy-related* European issues in their EP election manifestos.

#### *Intra-party dissent over European integration*

(H2a) The *less* parties are internally divided on EU issues, the *more* they will emphasize *constitutive* European issues in their EP election manifestos.

(H2b) The *more* parties are internally divided on EU issues, the *more* they will emphasize *policy-related* European issues in their EP election manifestos.

Apart from party-level factors, we also expect systemic characteristics to differently impact on the salience of the two types of EU issues. Ultimately, the challenge posed by Euro-critical forces should increase polarization over European integration in the party system

as a whole and, thus, affects the competitive context faced by all parties in the system (see Meijers, 2015). Also, the more parties differ in their EU positions, the more likely voters will be to vote on the basis of these positions (e.g. de Vries, 2007). In turn, this should offer further strategic incentives to parties to publicly emphasize these differences. As argued, Euro-critical parties will attempt to focus attention on differences regarding constitutive issues and rarely talk about EU policies, whereas the 'Europhiles' would ideally put most emphasis on policy-related European issues. However, when faced with sizable Euro-critical parties, it gets more likely that they are forced into talking about constitutive issues as well. Therefore, we expect that both party-level factors and polarization over Europe in the party system have different effects on the salience of the two types of issues. The focus on policy issues should be more pronounced in a context where parties disagree *less* on the fundamentals of integration. By contrast, the salience of constitutive issues should be greater in contexts characterized by high levels of polarization over European integration. Again, note that we do not expect that decreasing polarization leads to less emphasis on Europe in party manifestos but rather to increasing emphasis on European policies. To conclude, we formulate the following two hypotheses:

#### *Polarization over European integration*

(H3a) The *more* polarized the party system is over European integration, the *more* parties will emphasize *constitutive* European issues in their EP election manifestos.

(H3b) The *less* polarized the party system is on European integration, the *more* parties will emphasize *policy-related* European issues in their EP election manifestos.

### **Data and methods**

Our dependent variables are defined as emphasis on two major types of European issue mentioned in election manifestos issued ahead of EP elections. To measure these dependent variables, we use information from the Euromanifestos Project (EM). The EM data cover

party manifestos of all the relevant parties issued ahead of EP elections from 1979 to 2009.<sup>3</sup> As the EM project coded manifestos for EP elections and not for national elections, the original coding scheme of the Comparative Manifesto Project (CMP) has been adapted accordingly (Wüst and Volkens, 2003). Although some criticism has been raised vis-à-vis the usage of manifesto data in general (Mikhaylov et al., 2012), we are convinced that in the case of our undertaking, the EM data source is unique and highly appropriate. The advantages, outweigh shortcomings as e.g. the fact that we “only” cover official party statements, although we will discuss the impact of the chosen data source critically in the concluding section of the paper. Most importantly for our purpose, the data cover many issue categories related to the political system of the EU and a variable called ‘governmental frame.’ This frame variable lists the policy level to which an argument in a sentence refers. The variable has four categories: national, European, global, or unspecified. For example, a coder would assign a European frame to the following statement, “The EU has taken the lead on action to deal with climate change.” By contrast, “We will resist efforts by Labour to push through Heathrow expansion” clearly refers to national politics and is therefore coded accordingly (the two examples are taken from the Euromanifesto of the British Conservative Party in 2009). Note that the European political level is used by the coders when the governmental frame of the content *explicitly* refers to the European level.

The two innovations mentioned above allow us to distinguish between constitutive and policy-related European issues in a Euromanifesto (on the concepts, see Bartolini, 2005; Schmitt, 2007). Constitutive issues cover all categories related to the fundamental features of the EU’s political system, such as the competencies of different European institutions, membership issues, or questions related to the legitimacy or complexity of the EU (Table A1 in the Appendix provides detailed information on the assignment of the various coding categories). Policy-related issues, by contrast, refer to questions about how European

---

<sup>3</sup> Unfortunately, data for the 2014 EP election is not available so far.

institutions should use their competencies in policy making. Typical examples in this regard are categories related to economic policies, foreign special relationships, environmental protection, or immigration. For these categories, our categorization effort benefited from the inclusion of the governmental frame variable. In other words, we only coded statements as policy-related *European* issues when coders assigned the European political level as the governmental frame. Due to the expanding competencies of the EC/EU over time, the assignment of some issue categories depends on the year in which they were raised. To illustrate, we treat support or opposition toward the European Single Market as a constitutive issue until the implementation of the Single European Act in 1987. After that, such statements are classified as policy-related (see Table A.1). In the end, our dependent variables are the sum of positive and negative mentions of either constitutive or policy-related European issues as a percentage of all the coded quasi-sentences in a manifesto.

To operationalize our independent variables, we draw on the well-known Chapel Hill Expert Survey (CHES) (Bakker et al., 2012; Ray, 1999; Steenbergen et al., 2007). For indicators of parties' general positions towards European integration and party system polarization (H1, H2, and H3), we use the "position" variable from the CHES data set. By taking this variable indicating a party's support or opposition towards the EU from another independent data source, we avoid the problem that the positional variables are created from the salience measure used as our dependent variable.<sup>4</sup> Party system polarization is calculated according to Esteban and Ray's (1994) index. This indicates how much parties' EU positions differ from each other and takes into account the size of a given party (as measured by its vote share). Moreover, in this paper we address recent calls to systematically distinguish the effects of polarization from simple positional divisions (see Esteban and Schneider, 2008; Esteban and Ray, 1994; Indridason, 2011). In contrast to polarization, which takes into account the

---

<sup>4</sup> However, note that our key findings are the same if we rely on EM data, i.e. the position variable created by subtracting negative from positive references to the constitutive issues listed in Table A.1 in the Appendix.

position and size of all competitors, divisions refer to the greatest distance in EU positions between the most extreme parties in the system regardless of their size. Finally, to measure intra-party dissent on European issues we use the ‘dissent’ indicator provided by the CHES data (H2). As one might assume a curvilinear relationship between intra-party dissent and the salience of European issues, we decide to take into account two variables, both the single and the squared term (see Scott and Steenbergen, 2004).

Moreover, with an eye to previous research (in particular Spoon, 2012) we also take into account some additional control variables in our model, namely public opinion on Europe, party size, government status, and party family. In the case of public opinion, we draw on data from the European Election Study and Eurobarometer to measure ambivalence<sup>5</sup> in citizens’ attitudes to EU integration. Party size is measured as the party’s vote share in the last national elections. Government status indicates whether the party was part of the national government at the time of a given EP election. We use the party family as indicated in the EM data, generating dummy variables for green, regional, and nationalist parties. Detailed descriptions of the operationalization, data sources, and descriptive values are provided in Table A.2.

To identify the determinants of European constitutive and policy issues in EP party manifestos, we use regression analysis with a Prais-Winsten transformation technique. We decide to use this regression technique instead of a time-series cross-sectional analysis with a lagged dependent variable and panel-corrected standard errors (as proposed by Beck and Katz, 1995; applied by Spoon, 2012) because the inclusion of a lagged dependent variable “tends not only to absorb large parts of the trend in the dependent variable, but likely biases estimates” (Plümper et al., 2005). Moreover, and in line with Spoon (2012), we take two important decisions regarding the model specification. First, we cluster the standard errors by

---

<sup>5</sup> This variable thus maps whether the respondents have a clear-cut (positive or negative) opinion towards the EU, or are ambivalent over Europe. We assume that a non-ambiguous (good or bad) evaluation of the EU leads to higher levels of party-based EU issue salience since parties attempt to address their voters’ positions on the issue.

party because it seems unlikely that a party's manifestos are written independently of each other. Second, we include our independent variables as lagged variables because the writing process of a party manifesto starts about a year before the election in question (Däubler, 2012; Dolezal, 2012). Due to our use of the CHES data, we have a kind of natural lag which is smaller than that had we taken the five-year lag between two consecutive EP elections.<sup>6</sup>

Before starting with the empirical analysis, it seems important to spend some lines on the unit of observation and the case selection. The *unit of observation* is one party per country and year represented by one manifesto issued ahead of an EP election. Altogether, the number of observations per country pooled for all elections ranges from 10 (Italy) to 55 (Belgium). The EM data set comprises a total number of 624 European party manifestos in 27 EU member states and seven elections (1979, 1984, 1989, 1994, 1999, 2004, and 2009). For the following reasons the final number of cases is reduced for our analysis to  $N(\text{party})=401$  and  $N(\text{country})=14$  (Sweden, Denmark, Finland, Belgium, the Netherlands, France, Italy, Spain, Greece, Portugal, Germany, Austria, the United Kingdom, and Ireland).<sup>7</sup> First, we opt to exclude the countries that joined the EU in the 2000s since we are interested in the longer-term evolution and want to compare our results to the existing literature (e.g. de Vries and van de Wardt, 2010; Spoon, 2012; Steenbergen and Scott, 2004). In addition, the party systems in central and eastern European countries are still considered less stable when it comes to EP elections (Schmitt 2005). Second, as not all party manifestos have been coded due to missing documents for some early EP elections, we decide to exclude country/election combinations from the analysis for which the coded party manifestos represent fewer than 50 percent of

---

<sup>6</sup> For H1, H2, and H3, for the 2009 EP elections we therefore take CHES data from 2006 (and according to the same logic for 2004 we take 2002; for 1999, 1996; for 1994, 1992; for 1989, 1988; and for 1979 & 1984, 1984). Unfortunately CHES data is only available starting from 1984. However, Table A.3 (robustness check), where we present the results for the Main Model without data from 1979, shows quite similar results.

<sup>7</sup> As a matter of fact, the number of Euromanifestos varies over time for a single country. For instance, in the German case, our data set includes seven observations for the Social Democrats (SPD) – one observation per election (1979-2009), whereas data for the Austrian 'Liste Hans-Peter Martin' are only available for one election (2009), for the Portuguese CDU for two elections (2004, 2009), and for the Greek Syriza for three elections (1999, 2004, 2009).

voters in an election. Third, for some periods, information on our main independent variables is not available in the CHES data for all parties.

### **Mapping European issues in Euromanifestos**

How much space do parties dedicate to European issues in their Euromanifestos? To begin with, the results in Table 1 show that European issues (about 75 percent) are far more salient than national issues (about 24 percent) and the share of ‘uncodable’ quasi-sentences is negligible. Based on the election manifestos, EP elections are about European issues. This finding contrasts with the standard view of EP elections as ‘second order’ elections fought in the shadow of national politics. By contrast, our results are in line with recent survey-based research that shows that voters do take European issues into account when making their voting decisions in EP elections (e.g. Hobolt, 2009; Hix and Marsh, 2011; de Vries and van de Wardt, 2011; Clark and Rohrschneider, 2009; Schmitt et al., 2009). Regarding trends over time, one would expect political actors to have directed more and more attention to European issues, given the increasing transfers of authority, the inclusion of new member states, and the trend toward “constraining dissensus” in the last decades (Hooghe and Marks, 2009; de Wilde and Zürn, 2012). Research based on expert surveys (de Vries and van de Wardt, 2011: 174), mass media content (Hutter and Grande, 2014: 1010) and parliamentary debates (Rauh, 2015: 128) indicates an increasing, but non-linear, trend in salience. Based on the authoritative statements of parties in the context of EP elections, our findings do not support this expectation (Table 1). On average, European issues were as salient in Euromanifestos in 1979 as in 2009.

**<<< Table 1 about here >>>**

What do we gain from taking into account both constitutive and policy-related European issues? First, the descriptive results in Table 1 show that European issues are much more salient if we consider policy-related discussions. While in Spoon's (2012: 561) analysis, the average salience of European issues in Euromanifestos ranges between 19 and 25 percent, our findings show that European issues are much more relevant, with salience at around 75 percent. This confirms our expectation that EU policies make up a larger share of all European issues in Euromanifestos than in direct – and even more so than in mass-mediated – party communications in national elections (see Pennings, 2006; Guinaudeau and Persico, 2013; Senninger and Wagner, 2015; Hutter et al., 2016b). Second, there is some increase in the numbers of policy issues mentioned in the manifestos, whereas the salience of constitutive issues has instead decreased over time. More precisely, we observe a higher share of policy issues in all campaigns from 1994 onwards as compared to the first two EP elections in 1979 and 1984. In a way, this is good news, given Mair's (2000) normative argument on what should be discussed in the context of EP elections.

### **How to explain the salience of European issues in EP election manifestos?**

In the explanatory part of our empirical analysis, we run three different models: the first has the share of constitutive European issues as dependent variable (*CON*), the second has policy-related European issues (*POL*), and the third the overall share of European issues (*EU*). Each of these models is built up stepwise. In the first step (Main Model), we introduce our expected main determinants of EU issue salience to single out the effect of party position towards the EU, the degree of intra-party dissent, and the polarization in the party system while controlling for party division (Hypotheses 1 to 3). In the next step, we extend this main model by introducing further control variables. In Control Model I, we account for public opinion



towards the EU and the size and government status of each party as this has an impact on parties' involvement in European politics and thus might affect our findings. In Control Model II, we take into account party families to see whether the effect on EU issue salience of a party's position on Europe can be attributed to specific party families as shown in Spoon's (2012) study.<sup>8</sup>

The results presented in Table 2 indicate that the more Euro-critical parties are, the more they tend to put emphasis on *constitutive European issues* in their EP election manifestos (supporting Hypotheses 1). By contrast, neither intra-party dissent (H2) nor party polarization (H3) have a statistically significant effect on the salience of constitutive European issues. It seems that specific party positions matter most in explaining this type of EU issue emphasis in EP elections. The finding that party positions matter corresponds with studies that rely on expert surveys (e.g. de Vries and van de Wardt, 2011; Steenbergen and Scott, 2004; Whitefield and Rohrschneider, 2015). However, for party position towards Europe we need to mention that the effect is at a rather low level of statistical significance ( $p < 0.10$ ) in both the Main Model and in Control Model I, and although the effect is still positive in Control Model II it is no longer statistically significant.<sup>9</sup> Instead, two party family

---

<sup>8</sup> In addition to these models we perform a large set of different robustness checks for our Main Model (see Appendix Table A.3 to A.8) to demonstrate the stability of our results. In Table A.3, we check whether the results remain stable if we drop the 1979 election. Our main independent variables are as reliable as desired. In Table A.4, we run our model with a classical Time-Series-Cross-Section Analysis with panel-corrected standard errors and a lagged dependent variable instead of the Prais-Winsten transformation technique regression analysis. In Tables A.5 and A.6 we run our analysis with fixed effects for 'EP elections' and the 'Step of Integration'. In Table A.7 we test a modified version of our two dependent variables: policy and constitutive issues. The latter are modified with the aim of understanding 'European Single Market' and 'European Monetary Union' quasi-sentences as constitutive issues. Finally, in Table A.8, we take into account the length of manifestos. After this extensive set of robustness checks, we can guarantee the stability of our main effects, which do not deviate substantially in any of these models.

<sup>9</sup> When we control for the length of a manifesto the effect for party positions towards the EU on constitutive European issues is also no longer statistically significant (see Appendix Table A.8). At the same time, we observe that the shorter a manifesto, the more parties tend to emphasize constitutive issues. Additional tests suggest that, in many countries, Eurocritical parties tend to produce smaller manifestos for EP elections. In a way, this supports our claim that Eurocritical parties focus on the key constitutive features of integration and do not discuss the direction of EU policies at length. However, more research is needed to study the process of how Euromanifestos are generated and how much Eurocriticism and/or professionalization influence the length of a manifesto.

indicators result in statistically significant effects: Green parties tend to put less emphasis on constitutive European issues, while the opposite is true for parties belonging to the nationalist party family. This offers further support for our first hypothesis: Euro-critical parties – in the first two models indicated by a critical EU position and in the third model introduced simply via the nationalist party family – put more emphasis on constitutive issues.

<<< **Table 2 about here** >>>

We observe striking differences if we turn to *policy-related European issues*. First of all, our results show that the less Euro-critical parties are, the more likely they are to emphasize European policy issues in Euromanifestos (H1). The same can be observed for party polarization (H3). The more polarized the party system is over Europe, the less parties tend to emphasize European policies in their manifestos. In other words, EU policy issues are more likely to be emphasized by Euro-friendly parties and in an environment that is less polarized over European matters. This finding provides strong support for our claim that the dynamics of EU issue competition are fundamentally different when we look at EU policies. Pro-European forces have far less to lose – or, according to Börzel and Risse (2009), might even benefit – from focusing the debate on EU policies. These two effects remain stable in all the models even when taking into account the two sets of control variables – again, there is no significant effect of intra-party dissent on EU issue emphasis (disconfirming H2). This time, two interesting effects appear within the control models. First, public opinion on Europe matters for the salience of EU policy issues. The less ambivalent public opinion is over Europe, the more parties tend to emphasize European policies in their manifestos. Spoon (2012: 570) interprets the opposite effect in her results (but with constitutive European issues as dependent variable) as indicating that parties may not be responsive to voters. Our results suggest the opposite: if the public takes a clear stance on European integration, parties tend to

focus more on policy-related EU issues. Second, the nationalist party family again has an impact on EU issue emphasis. The negative effect displayed in Table 2 (Control Model II) signifies that nationalist parties tend to put less emphasis on European policy issues. However, this time the negative effect of EU-criticism remains statistically significant even if we control for party families.

Moreover, the third model including the overall share of European issues (*EU*) as dependent variable nicely illustrates the main drivers of EU issue salience in general. All the main effects are almost identical to the policy models which means that taking into account policy issues has important implications for our understanding of EU issue salience in EP elections. That is, according to our findings, Europe is more likely to be emphasized by pro-European parties and in a party system that is less polarized over Europe. This is important insofar as the existing literature mainly offers arguments for why Euro-friendly parties might try to de-emphasize (constitutive) European issues, but these arguments do not fit well when trying to explain parties' different emphases on policy-related European issues.

Obviously, the initial idea of a need to differentiate among EU issue types matches the empirical evidence. Our findings clearly show that the salience of constitutive issues involves different mechanisms to the salience of policy issues. To illustrate this in more detail, Figure 1 plots the different effects of party position towards the EU (H1). The graphs show that there is a positive relationship between the party position toward European integration and the salience of constitutive issues, whereas we can see a clear negative link in the case of policy issues. Hence, anti-European parties are less likely to refer to policy issues, while pro-European parties put much more emphasis on European policies in their manifestos. Numerically this means that if a party position changes one unit from a pro-European to an anti-European position, the share of policy issues *decreases* by 2.45 percentage points; in contrast, the share of constitutive issues *increases* by 0.82 percentage points. Figure 2 is even more telling when it comes to the dissimilar patterns between constitutive and policy

European issues. The graphs show that there is no significant relationship between party system polarization (i.e. the distance between parties weighted by party size) toward European integration and the salience of constitutive issues, whereas we can identify a strong effect in the case of policy issues. If the polarization of the party system changes one unit from no or little polarization over Europe to a high degree of polarization, the share of policy issues *decreases* by 6.30 percentage points.

## **Discussion**

How much and why do political parties emphasize European issues in their appeals to the public? Our knowledge about the partisan supply in EP elections is still fairly limited – at least when compared to vote choice in EP elections. EP elections were, and to a large extent still are, characterized as ‘second order national contests’ in which domestic concerns trump over European issue contests. However, there is increasing evidence that European issues play a more important role in both the demand and supply sides (for a review, see Hobolt, 2015). Our findings support this latter view to a large extent. Conducting the first large-N empirical study that systematically distinguishes between polity and policy contestation has allowed us to reconsider previous findings on the salience of Europe and its driving forces in EP elections.

We can summarize our main results as follows. *First*, by distinguishing between constitutive and policy-related European issues, we have been able to show that European issues are much more salient in the partisan offer than is often assumed. Manifestos issued before EP elections are about European issues and, most importantly, parties discuss the kind of European policies they want at length. Thus, based on the programmatic statements of parties, EP elections conform to the normative standard introduced by Mair (2000, 2007) and Risse (2010). They are about European policy-making and do not primarily focus on the

fundamentals of the EU polity or purely domestic questions. *Second*, the two types of European issues are salient under different conditions. Different dynamics are at play depending on the kind of European issue at stake. The party position on European integration is highly relevant: if a party takes a more Euro-critical position, it is more likely to highlight constitutive issues in its Euromanifesto, whereas Euro-friendly parties tend to put more emphasis on policies. Moreover, in contexts characterized by less polarized conflicts over European integration, all parties are more likely to emphasize such EU policies. Overall, this confirms our expectation that Euro-critical challengers sense the opportuneness of emphasizing constitutive European issues with all their potential to restructure domestic party competition. However, at least in their Euromanifestos, pro-European forces do not shy away from talking about Europe, but they emphasize another type of Europe by debating the way Europe does (and should) intervene in daily policy-making.

Altogether, our study has provided new insights for the understanding of EU issue competition. First, and most importantly, we have been able to demonstrate the importance of distinguishing between different types of European issues. Of course, this raises further questions about comparisons to other arenas. Is the salience of policy and constitutive issues comparable in manifestos and public debates? Why is it that although European policies are very salient in Euromanifestos they do not seem to make it into the media (Adam and Maier, 2011; Dolezal, 2012; Schuck et al., 2011)? In this context, future research should examine what role party strategies and the media logic play in explaining these differences. Moreover, we need more research on the question of how much we can generalize from manifesto data, or to put it in common terms: What are the differences between the several data sources exploited for research questions on issue salience – e.g. namely manifesto data, public debates, and expert surveys. Second, the negative effect of polarization on the salience of policy-related European issues merits further investigation. It might indicate that in EP elections Euro-critical forces can prevent more salient debates over EU policies, which

supports recent work on the contagion effect of Euroscepticism on mainstream competitors (Meijers, 2015). Moreover, our closer look at the polarization-salience nexus offers interesting insights for the literature on the politicization of Europe too. Debating European policies is more likely in contexts characterized by fewer fundamental integration conflicts. However, in such contexts we might not necessarily observe *less* politicization but different manifestations of politicization. Finally, our results point to some degree of normalization of EU issue competition as European policies have become more salient relative to constitutive issues in the post-Maastricht period. However, our study has only made a first step and more work is needed to explain the pronounced variation over time and across countries. In sum, there is much to discover if we take Marks's (2004: 241) advice seriously: "European integration is diverse [...]. It depends on what issue one is talking about."

## References

- Adam S and Maier M (2011) National parties as politicizers of EU integration? Party campaign communication in the run-up to the 2009 European Parliament election. *European Union Politics* 12: 431-453.
- Bakker R, de Vries CE, Edwards E, Hooghe L, Jolly S, Marks G, Polk J, Rovny J, Steenbergen M and Vachudova M (2012) Measuring party positions in Europe: The Chapel Hill expert survey trend file, 1999-2010. *Party Politics* 21: 1-15.
- Bartolini S (2005) *Restructuring Europe: Centre formation, system building, and political structuring between the nation state and the European Union*. Oxford: Oxford University Press.
- Beck N and Katz JN (1995) What to do (and not to do) with Time-Series Cross-Section Data. *American Political Science Review* 89: 634-647.
- Börzel TA and Risse T (2009) Revisiting the Nature of the Beast – Politicization, European Identity, and Postfunctionalism. A Comment on Hooghe and Marks. *British Journal of Political Science* 39: 217-220.
- Braun D, Schmitt H, Wüst AM, Popa SA, Mikhaylov S and Dwinger F (2015) European Parliament Election Study 1979-2009, Manifesto Study Köln: GESIS Datenarchiv.
- Carmines EG (1991) The Logic of Party Alignments. *Journal of Theoretical Politics* 3: 65-80.
- Clark N and Rohrschneider R (2009) Second-Order Elections versus First-Order Thinking: How Voters Perceive the Representation Process in a Multi-Layered System of Governance. *Journal of European Integration* 31: 645-664.
- Däubler T (2012) Wie entstehen Wahlprogramme? Eine Untersuchung zur Landtagswahl in Baden-Württemberg 2006. *Zeitschrift für Politikwissenschaft* 22: 333-365.
- de Vries CE (2007) Sleeping Giant: Fact or Fairytale? How European Integration Affects National Elections. *European Union Politics* 8: 363-385.
- de Vries CE and Hobolt S (2012) When dimensions collide: The electoral success of issue entrepreneurs. *European Union Politics* 13: 246-268.
- de Vries CE and van de Wardt M (2011) EU issue salience and domestic party competition. In: Oppermann K and Viehrig H (eds) *Issue Salience in International Politics*. London: Routledge, pp. 173-187
- de Wilde P, Leupold A and Schmidtke H (2016) Introduction: the differentiated politicisation of European governance. *West European Politics* 39: 3-22.
- de Wilde P and Zürn M (2012) Can the Politicization of European Integration be Reversed? *Journal of Common Market Studies* 50: 137-153.
- Dolezal M (2012) Restructuring the European political space: the supply side of European electoral politics. In: Kriesi H, Grande E, Dolezal M, et al. (eds) *Political conflict in the age of globalization*. Cambridge: Cambridge University Press, pp. 127-150
- Esteban J and Ray D (1994) On the Measurement of Polarization. *Econometrica* 62: 819-851.
- Esteban J and Schneider G (2008) Polarization and Conflict: Theoretical and Empirical Issues. *Journal of Peace Research* 45: 131-141.
- Fazekas Z, Popa SA, Schmitt H, Pablo B and Theocharis Y (2015) When to talk about Europe? Selective Europeanization of the 2014 EP Elections. *5th Annual General Conference of the European Political Science Association, 25.-27. June 2015*. Vienna.
- Franklin M, van der Eijk C and Marsh M (1996) Conclusion: The Electoral Connection and the Democratic Deficit. In: Franklin MN and van der Eijk C (eds) *Choosing Europe? The European Electorate and National Politics in the Face of Union*. Ann Arbor: University of Michigan Press, pp. 366-390
- Green-Pederson C (2012) A Giant Fast Asleep? Party Incentives and the Politicisation of European Integration. *Political Studies* 60: 115-130.

- Guinaudeau I and Persico S (2013) EU politicization through the lens of salience: How the EU enters the French, British and German electoral agenda (1986–2009). *French Politics* 11: 143-168.
- Helbling M and Tresch A (2011) Measuring party positions and issue salience from media coverage: Discussing and cross-validating new indicators. *Electoral Studies* 30: 174-183.
- Hix S and Marsh M (2011) Second-Order Effects Plus Pan-European Political Swings: an Analysis of European Parliament Elections Across Time *Electoral Studies* 30: 4-15.
- Hix S, Noury AG and Roland G (2007) *Democratic Politics in the European Parliament*. Cambridge: Cambridge University Press.
- Hobolt S (2009) *Europe in Question: Referendums on European Integration*. Oxford: Oxford University Press.
- Hobolt, S (2015) *The 2014 European Parliament elections: divided in unity?* Journal of Common Market Studies, 53 (S1). 6-21.
- Hobolt SB and de Vries CE (2015) Issue Entrepreneurship and Multiparty Competition. *Comparative Political Studies* online first: April 2015: 1-27.
- Hoeglinger D (2016) The politicisation of European integration in domestic election campaigns. *West European Politics* 39: 44-63.
- Hooghe L and Marks G (2009) A Postfunctionalist Theory of European integration: From Permissive Consensus to Constraining Dissensus. *British Journal of Politic Science* 39: 1-23.
- Hooghe L, Marks G and Wilson CJ (2002) Does Left/Right Structure Party Positions on European Integration? *Comparative Political Studies* 35: 965-989.
- Hutter S and Grande E (2014) Politicizing Europe in the national electoral arena: A comparative analysis of five West European countries, 1970-2010. *Journal of Common Market Studies* 52: 1002-1018.
- Hutter S, Grande E and Kriesi H (2016a) *Politicising Europe: Integration and Mass Politics*. Cambridge: Cambridge University Press.
- Hutter S, Braun D and Kersch A (2016b) Constitutive issues as driving forces of politicisation? In: Hutter S, Grande E and Kriesi H (eds) *Politicising Europe: Integration and Mass Politics*. Cambridge: Cambridge University Press, pp. 137-155.
- Indridason IH (2011) Coalition formation and polarisation. *European Journal of Political Research* 50: 689-718.
- Kriesi H (2007) The Role of European Integration in National Election Campaigns. *European Union Politics* 8: 83-108.
- Kriesi H, Grande E, Lachat R, Dolezal M, Bornschier S and Frey T (2006) Globalization and the transformation of the national political space: Six European countries compared. *European Journal of Political Research* 45: 921-956.
- Kriesi H, Grande E, Lachat R, Dolezal M, Bornschier S and Frey T (2008) *West European Politics in the Age of Globalization*. Cambridge: Cambridge University Press.
- Mair P (2000) The Limited Impact of Europe on National Party Systems. *West European Politics* 23: 27-51.
- Mair P (2007) Political Parties and Party Systems. In: Graziano P and Vink M (eds) *Europeanization. New Research Agendas*. Houndmills: Pallgrave Macmillan, pp. 154-166.
- Marks G (2004) Conclusion: European Integration and Political Conflict. In: Marks G and Steenbergen MR (eds) *European Integration and Political Conflict*. Cambridge: Cambridge University Press, pp. 235-259.
- Meijers M (2015) Contagious Euroscepticism: The impact of Eurosceptic support on mainstream party positions on European integration. *Party Politics* Online First DOI 10.1177/1354068815601787.



- Mikhaylov S, Laver M, and Benoit K (2012) Coder Reliability and Misclassification in the Human Coding of Party Manifestos. *Political Analysis* 20(1): 78–91.
- Netjes CE and Binnema HA (2007) The salience of the European integration issue: Three data sources compared *Electoral Studies* 26: 39-49.
- Pennings P (2006) An Empirical Analysis of the Europeanization of National Party Manifestos, 1960-2003. *European Union Politics* 7: 257-270.
- Plümper T, Troeger VE and Manow P (2005) Panel Data Analysis in Comparative Politics: Linking Method to Theory *European Journal of Political Research* 44: 327-354.
- Popa SA and Dumitrescu D (2015) National but European? Visual manifestations of Europe in national parties' Euromanifestos since 1979. *Party Politics* 16: 1-12.
- Rauh C (2015) Communicating supranational governance? The salience of EU affairs in the German Bundestag, 1991–2013. *European Union Politics* 16: 116-138.
- Ray L (1999) Measuring Party Orientations Towards European Integration: Results from an Expert Survey. *European Journal of Political Research* 36: 283-306.
- Reif K and Schmitt H (1980) Nine Second-Order National Elections – A Conceptual Framework for the Analysis of European Election Results. *European Journal of Political Research* 8: 3-44.
- Risse T (2010) *A community of Europeans? Transnational identities and public spheres*. Ithaca, NY [u.a.]: Cornell Univ. Press.
- Risse T (2015) *European Public Spheres: Politics is Back*. Cambridge: Cambridge University Press.
- Schattschneider EE (1960 [1942]) *Party Government*. New York: Holt, Rinehart and Winston.
- Schmitt H (2005) The European Parliament Elections of June 2004: Still Second-Order? *West European Politics* 28: 650-679.
- Schmitt H (2007) The Nature of European Issues: Conceptual Clarifications and Some Empirical Evidence. In: De Vreese CH and Schmitt H (eds) *A European Public Sphere: How much of it do we have and how much do we need?* : CONNEX Report Series No. 2, pp. 11-22.
- Schmitt H, Sanz A and Braun D (2009) Motive individuellen Wahlverhaltens in Nebenwahlen: Eine theoretische Rekonstruktion und empirische Überprüfung. In: Gabriel OW, Weßels B and Falter JW (eds) *Wahlen und Wähler: Analysen aus Anlass der Bundestagswahl 2005*. Wiesbaden VS Verlag pp. 585-605.
- Schuck ART, Xezonikas G, Elenbaas M, Banducci SA and De Vreese CH (2011) Party contestation and Europe on the news agenda: The 2009 European Parliamentary Elections. *Electoral Studies* 30: 41-52.
- Senninger R and Wagner M (2015) Political parties and the EU in national election campaigns: who talks about Europe, and how? *JCMS: Journal of Common Market Studies* 53: 1336-1351.
- Spoon J-J (2012) How salient is Europe? An analysis of European election manifestos, 1979–2004. *European Union Politics* 13: 558-579.
- Steenbergen MR, Hooghe L and Marks G (2007) Evaluating Expert Judgments *European Journal of Political Research* 46: 347-366.
- Steenbergen MR and Scott DJ (2004) Contesting Europe? The salience of European integration as a party issue. In: Marks G and Steenbergen MR (eds) *European Integration and Political Conflict*. Cambridge: Cambridge University Press, pp. 165-192.
- van de Wardt M, de Vries CE and Hobolt S (2012) Exploiting the Cracks: Wedge Issues in Multiparty Competition. *The Journal of Politics* 76: 986-999.

Whitefield S and Rohrschneider R (2015) The Saliency of European Integration to Party Competition: Western and Eastern Europe Compared. *East European Politics and Societies and Cultures* 29: 12-39.

Wüst AM and Volkens A (2003) Euromanifesto Coding Instructions. *Mannheimer Zentrum für Europäische Sozialforschung* 63.

## Figures and Tables

Table 1: Saliency of European and national issues in Euromanifestos (shares as percentages)

<b>Election</b>	<b>National issues</b>		<b>European Issues</b>				<b>Uncodable</b>		<b>N</b>
	Mean (SD)		<i>Policy Issues</i>		<i>Constitutive Issues</i>		Mean (SD)		
1979	22.82	(14.12)	51.31	(14.94)	25.44	(10.82)	0.43	(0.76)	25
1984	28.17	(19.00)	49.98	(19.10)	21.45	(9.81)	0.40	(0.72)	30
1989	25.35	(18.63)	58.09	(18.88)	16.15	(9.78)	0.41	(0.59)	40
1994	25.08	(18.04)	54.97	(17.32)	19.45	(9.19)	0.49	(1.29)	67
1999	23.32	(19.53)	56.29	(17.88)	19.73	(9.01)	0.65	(3.39)	81
2004	20.64	(16.12)	59.50	(16.06)	19.56	(10.40)	0.30	(0.79)	79
2009	23.53	(15.49)	59.87	(17.28)	16.02	(11.38)	0.58	(1.29)	79
All	23.66	(17.42)	56.81	(17.49)	19.05	(10.30)	0.49	(1.77)	401

*Note:* The table shows the average share of European and national issues in the pooled dataset.

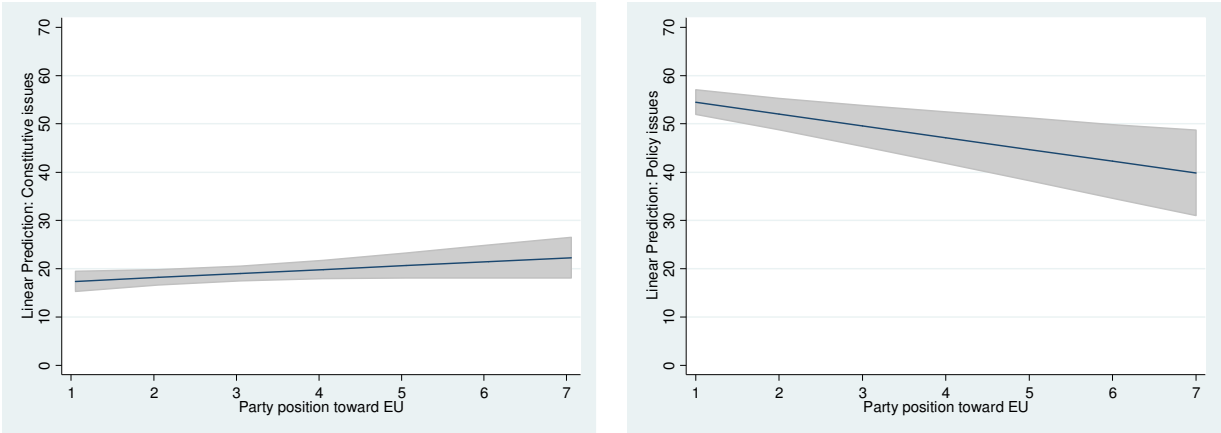
*Source:* Euromanifesto data 1979-2009. See Braun et al. (2015).

Table 2: The impact of systemic and party level factors on the salience of European integration

	Main Model			Control Model I			Control Model II		
	CON	POL	EU	CON	POL	EU	CON	POL	EU
<b>Independent variables</b>									
EU party position (H1)	0.82*	-2.45***	-1.76***	0.91*	-2.66***	-1.88***	0.68	-2.20***	-1.61**
	(0.456)	(0.639)	(0.657)	(0.484)	(0.642)	(0.662)	(0.517)	(0.625)	(0.690)
Intra-party dissent (H2)	0.50	-1.11	-0.61	0.45	-0.83	-0.37	0.98	-1.41	-0.43
	(1.428)	(1.856)	(2.021)	(1.414)	(1.832)	(2.074)	(1.395)	(1.822)	(2.102)
Intra-party dissent <sup>2</sup> (H2)	-0.06	0.20	0.14	-0.06	0.19	0.13	-0.10	0.23	0.13
	(0.162)	(0.217)	(0.219)	(0.159)	(0.217)	(0.228)	(0.157)	(0.216)	(0.230)
EU party system polarization (H3)	1.25	-6.30***	-5.43***	1.05	-5.48***	-4.74***	0.83	-5.29***	-4.73***
	(0.892)	(1.239)	(1.277)	(0.935)	(1.250)	(1.257)	(0.900)	(1.272)	(1.298)
<b>Control variables</b>									
EU party division	-0.77	1.01	0.36	-0.69	0.70	0.15	-0.56	0.59	0.14
	(0.514)	(0.737)	(0.738)	(0.528)	(0.744)	(0.742)	(0.514)	(0.731)	(0.743)
Public ambivalence				0.10	-0.41***	-0.31***	0.10	-0.39***	-0.29**
				(0.077)	(0.100)	(0.113)	(0.078)	(0.098)	(0.112)
Government party				0.41	0.45	1.21	0.17	0.80	1.22
				(1.158)	(1.436)	(1.531)	(1.065)	(1.412)	(1.546)
Vote share				0.04	-0.12	-0.10	0.02	-0.14	-0.12
				(0.062)	(0.099)	(0.107)	(0.069)	(0.110)	(0.112)
Party family: green							-6.97***	5.00	-1.77
							(1.577)	(3.370)	(3.462)
Party family: regional							2.69	-3.88	-1.16
							(2.736)	(3.677)	(4.175)
Party family: nationalist							9.27*	-16.26***	-6.70
							(5.044)	(4.763)	(6.300)
Constant	19.01***	56.93***	75.92***	16.07***	68.01***	84.08***	16.50***	68.15***	84.62***
	(0.772)	(1.219)	(1.139)	(2.081)	(2.808)	(2.829)	(2.124)	(3.173)	(2.934)
Adjusted R <sup>2</sup>	0.17	0.19	0.24	0.16	0.20	0.24	0.19	0.22	0.24
Clusters (party)	106	106	106	106	106	106	106	106	106
Observations	401	401	401	401	401	401	401	401	401

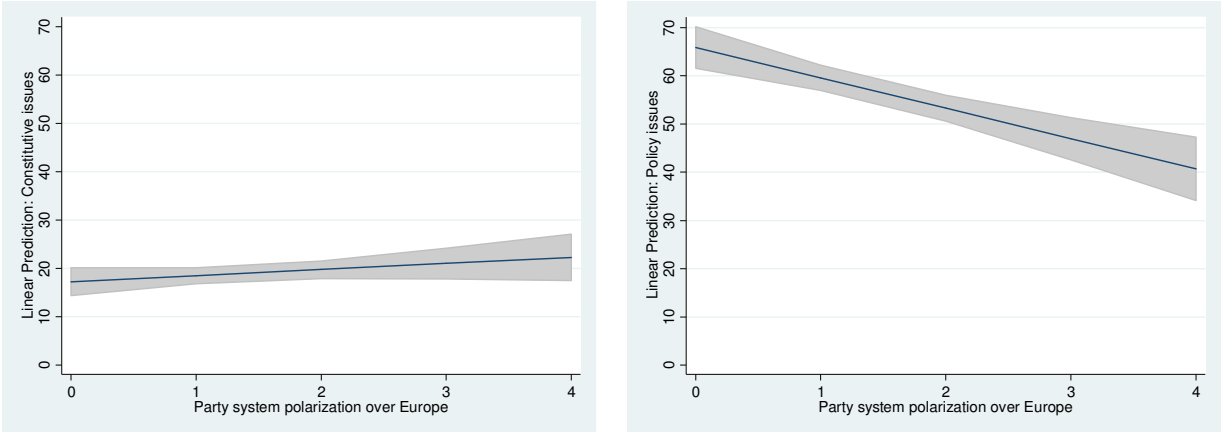
Notes: The table entries are regression coefficients (b-values) from a Prais-Winsten regression correcting for panel-specific autocorrelation in error terms over one period (AR 1). Panel-corrected standard errors in parentheses. The dependent variables are the salience of constitutive (CON) and policy (POL) European issues and the full (compound) salience of European issues (EU) in 14 Western European countries (as data for Luxembourg is missing in the Chapel Hill data, we omit this country from our analysis) for seven EP elections (1979 – 2009). The independent variables are centred for the analysis. \*  $p < 0.10$ , \*\*  $p < 0.05$ , \*\*\*  $p < 0.01$

Figure 1: Link between European issues and party position toward the EU



Notes: The estimations are based on the results gained from the Main Model. Adjusted predictions with 95 percent confidence intervals. The Y-axis represents the share of constitutive or policy issues in a Euromanifesto per country and election (constitutive issues range from 0 to 75 percent; policy issues from 0 to 91 percent). The X-axis represents the party position towards Europe, ranging from 1 (=Pro-EU) to 7 (=Anti-EU).

Figure 2: Link between European issues and party polarization over Europe



Notes: The estimations are based on the results gained from the Main Model. Adjusted predictions with 95 percent confidence intervals. The Y-axis represents the share of constitutive or policy issues in a Euromanifesto per country and election (constitutive issues range from 0 to 75 percent; policy issues from 0 to 91 percent). The X-axis represents party polarization over Europe, ranging from 0 (=low degree) to 4 (=high degree).

## Appendix

Table A.1: Operationalization of the two types of European issues

<b>Constitutive issues</b>
Europe, European Community/ Union in general, Transfer of Power to EU/EC <sup>#</sup> , Competences of the European Parliament <sup>#</sup> , Competences of the European Commission <sup>#</sup> , Competences of the European Council/ Council of Ministers <sup>#</sup> , Voting Procedures in the (European) Council <sup>#</sup> , Competences of the European Court of Justice <sup>#</sup> , Competences of other EU/EC Institutions <sup>#</sup> , Mentions of European Central Bank (until 1993), EU/EC Enlargement <sup>#</sup> , Membership Turkey <sup>#</sup> , Complexity of EU/EC Political System <sup>#</sup> , EU/EC Structural Funds (until 1987) <sup>#</sup> , European Monetary Union/European Currency (until 1993; in Euro countries until now) <sup>#</sup> , European Single Market (until 1987) <sup>#</sup> , EU Integration <sup>#</sup> , Constitutionalism <sup>*</sup> , Decentralization <sup>*</sup> , National Way of Life <sup>*</sup>
<b>Policy issues</b>
Incentives <sup>*</sup> , Keynesian Demand Management <sup>*</sup> , Productivity <sup>*</sup> , Technology and Infrastructure <sup>*</sup> , Protectionism <sup>*</sup> , Anti-Growth Economy <sup>*</sup> , Economic Orthodoxy <sup>*</sup> , Economic Goals <sup>*</sup> , Creating Jobs <sup>*</sup> , Labor Migration <sup>*</sup> , European Single Market (after 1987) <sup>#</sup> , Labor Groups <sup>*</sup> , Agriculture and Farmers <sup>*</sup> , Middle Class and Professional Groups <sup>*</sup> , Foreign Special Relationships (FSR), <sup>#</sup> Foreign Special Relationships (FSR) to Eastern European Countries of EU <sup>#</sup> , FSR to Eastern European Countries not in the EU <sup>*</sup> , FSR to Russia <sup>*</sup> , Mentions of European Central Bank (after 1993) <sup>#</sup> , Environmental Protection <sup>*</sup> , Culture in the Manifesto Country <sup>*</sup> , Social Harmony <sup>*</sup> , Anti-Imperialism <sup>*</sup> , Military <sup>*</sup> , Peace <sup>*</sup> , Internationalism <sup>*</sup> , Financing the EU/EC <sup>#</sup> , Human Rights <sup>*</sup> , Freedom <sup>*</sup> , Democracy <sup>*</sup> , Multiculturalism <sup>*</sup> , Traditional Morality <sup>*</sup> , Immigration <sup>*</sup> , Political Corruption <sup>*</sup> , Political Authority <sup>*</sup> , Free Enterprise <sup>*</sup> , Property-Restitution <sup>*</sup> , Controlled Economy <sup>*</sup> , Social Ownership: Positive <sup>*</sup> , Mixed Economy <sup>*</sup> , Economic Planning <sup>*</sup> , Nationalization <sup>*</sup> , Corporatism <sup>*</sup> , Market Regulations <sup>*</sup> , Marxist Analysis <sup>*</sup> , Publicly-Owned Industry <sup>*</sup> , Socialist Property <sup>*</sup> , Privatization <sup>*</sup> , Executive and Administrative Efficiency <sup>*</sup> , Underprivileged Minority Groups (UMG) <sup>*</sup> , UMG: Handicapped <sup>*</sup> , UMG: Homosexuals <sup>*</sup> , UMG: Immigrants and Foreigners, UMG: Ethnic Minorities/People of the Manifesto Country Living Abroad <sup>*</sup> , Law and Order <sup>*</sup> , Fight against terrorism <sup>*</sup> , Welfare State <sup>*</sup> , Education (Limitation vs. Expansion) <sup>*</sup> , Job Programs <sup>*</sup> , Social Justice <sup>*</sup> , Pensions <sup>*</sup> , Health care and Nursing Service <sup>*</sup> , Social Housing <sup>*</sup> , Child Care <sup>*</sup> , European Monetary Union/European Currency (after 1993 and in Euro countries) <sup>#</sup> , EU/EC Structural Funds (after 1987) <sup>#</sup> , Non-economic Demographic Groups (NEDG) <sup>*</sup> , NEDG: Women <sup>*</sup> , NEDG: Old People <sup>*</sup> , NEDG: Young People <sup>*</sup> , NEDG: Linguistic Groups <sup>*</sup>

Source: Euromanifestos Codebook (Braun et al. 2015)

Notes: <sup>#</sup> = coding categories at the national, EU, and global level are used; <sup>\*</sup> = coding categories at the EU level only are used whereas the remaining coding categories at the national level are considered purely national issues and not taken into account for the analysis of European issues. In some cases we use the coding category for one time period (mostly the earlier time period) as the indicator for constitutive issues, while the later period is treated as a policy issue (e.g. European Single Market: before 1987 constitutive issue, after 1987 policy issue). In the 2009 data, each coding category consists of a positive and a negative occurrence; in the 1979-2004 data this does not apply to the full range of coding categories. Nevertheless, these deviations in the data are less relevant for our study as we are only interested in the salience of European issues.

Table A.2: Hypotheses and operationalization of independent and control variables

Hypothesis	Indicator	Operationalization	Data source
<b>Party level</b>			
H1: The more EU-critical a party, the more salient European issues for the party.	A party's general position towards the EU	We take the <i>position</i> variable and combine the Ray and Marks/Steenbergen Party Dataset (position: 1984-1999) and the Chapel Hill Expert Survey (position: 2002-2006). Low values (1) indicate support for and higher values (7) indicate opposition to European integration (min: 1; max: 7; SD: .1.72)	Ray and Marks/Steenbergen Party Dataset and Chapel Hill Expert Survey (1984-2006)
H2: The more a party is internally divided on EU issues, the less salient European issues are for the party.	Intra-party dissent over Europe	We take the <i>dissent</i> variable and combine the Ray and Marks/Steenbergen Party Dataset (dissent1: 1984-1999) and the Chapel Hill Expert Survey (eu_dissent: 2002-2006). We recode the variable so that low values (0) indicate unity and higher values (11) indicate maximized intra-party conflict. Degree of dissent within a party on European integration (min: 0.22; max: 8.80; SD: 1.61) and squared term (min: 0.05; max: 77.44.16; SD: 13.70).	Ray and Marks/Steenbergen Party Dataset and Chapel Hill Expert Survey (1984-2006). We combine the five-point coding of the variable from 1984, 1988, 1992, 1999 with the eleven-point scaling from 2002 and 2006 by multiplying the CHES dissent values by 2.2.
<b>Party system level</b>			
H3: The more polarized positions towards Europe in a country, the more salient European issues become.	Party polarization over Europe (per country and election year)	We take the <i>position</i> variable and combine the Ray and Marks/Steenbergen Party Dataset (position: 1984-1999) and the Chapel Hill Expert Survey (position: 2002-2006). These positions are used to compute the polarization index by Esteban and Ray (1994; see also Esteban and Schneider 2008; Indridason 2011)	Ray and Marks/Steenbergen Party Dataset and Chapel Hill Expert Survey (1984-2006)
		$P = K \sum_{i=1}^n \sum_{j=1}^n \pi_i^{\alpha+1} \pi_j  y_i - y_j $ <p>where <math>n</math> is the number of political parties, <math>\pi_i</math> is the vote share of party <math>i</math> and <math>y_i</math> is EU position of party <math>i</math>. Thus, <math> y_i - y_j </math> is the absolute distance between parties <math>i</math> and <math>j</math>. There are two 'free' parameters. <math>K</math> is a scalar whose value does not matter (we opt for 5). The parameter alpha can take values from <math>(1, \alpha^*)</math> where <math>\alpha^* \approx 1.6</math>. range. We opt for a value of 1. (min: 0.00; max: 4.00; SD: 0.68).</p>	
<b>Control variables</b>			
Control variable for party polarization (see H3)	Party divisions over Europe (per country and election year)	We take the <i>position</i> variable and combine the Ray and Marks/Steenbergen Party Dataset (position: 1984-1999) and the Chapel Hill Expert Survey (position: 2002-2006). The division indicates the difference in EU position between the two most dissimilar parties in the party system (min: .0.70; max: 6.00; SD=1.29).	Ray and Marks/Steenbergen Party Dataset and Chapel Hill Expert Survey (1984-2006)
Public opinion over Europe	Voters' ambivalence on EU membership (per country)	Public opinion on whether a country's membership of the EU is good, bad, or neither. We take the percentage of the category <i>neither</i> as a measure of voter ambivalence towards the EU (min: 7.07; max: 38.93; SD: 6.55).	European Election Study (EES 1989-2004, 2009); in cases where EES data is not available we use Eurobarometer (EB) data

	and election year)		(1979, 1984)
Government party	Party strength	Party was part of the national government at time of EP elections. 0 indicates that the party was not part of the government (N=284); 1= indicates that the party was part of the government (N=117)	<a href="http://www.parties-and-elections.eu/countries.html">http://www.parties-and-elections.eu/countries.html</a> (16.03.2016)
Vote share	Party size	A party's vote share in the closest national election (min: 0; max: 48.40; SD: 11.28)	<a href="http://www.parties-and-elections.eu/countries.html">http://www.parties-and-elections.eu/countries.html</a> (16.03.2016)
Party family	Green, regional, nationalist party family	Party family (pfamily) as indicated in the Euromanifesto data is used to compute dummy variables for green (N=46), regional (N=38), and nationalist parties (N=18).	Euromanifesto data 2015



Table A.3: Robustness check I: Main model without 1979 data

	CON	POL	EU
Party position towards the EU (H1)	0.82* (0.460)	-2.44*** (0.653)	-1.75** (0.672)
Intra-party dissent over EU (H2)	0.11 (1.365)	-0.99 (1.843)	-0.87 (2.014)
Intra-party dissent over EU, curvilinear (H2)	-0.03 (0.153)	0.19 (0.215)	0.17 (0.213)
Party system polarization over EU (H3)	0.46 (0.858)	-6.57*** (1.248)	-6.62*** (1.359)
Party system division over EU	-0.28 (0.527)	1.29 (0.797)	1.14 (0.809)
Constant	18.61*** (0.777)	57.21*** (1.261)	75.83*** (1.175)
Adjusted $R^2$	0.15	0.18	0.22
Observations	376	376	376

*Notes:* The table entries are regression coefficients (b-values) from a Prais-Winsten regression correcting for panel-specific autocorrelation in error terms over one period (AR 1). Panel-corrected standard errors in parentheses. The dependent variables are the salience of constitutive (CON) and policy (POL) European issues and the full (compound) salience of European issues (EU) in 14 Western European countries (as data for Luxembourg are missing in the Chapel Hill data, we omit this country from our analysis) for seven EP elections (1984 – 2009). The independent variables are centred for the analysis. \*  $p < 0.10$ , \*\*  $p < 0.05$ , \*\*\*  $p < 0.01$

Table A.4: Robustness check II: Main model with TSCS and lagged dependent variable

	CON	POL	EU
Lagged dependent variable	0.46*** (0.053)	0.44*** (0.050)	0.34*** (0.052)
Party position towards the EU (H1)	0.41 (0.315)	-1.55*** (0.521)	-1.38** (0.567)
Intra-party dissent over EU (H2)	-0.08 (1.151)	0.26 (1.861)	0.04 (2.022)
Intra-party dissent over EU, curvilinear (H2)	0.03 (0.136)	0.01 (0.220)	0.07 (0.239)
Party system polarization over EU (H3)	0.50 (0.915)	-4.65*** (1.517)	-4.72*** (1.634)
Party system division over EU	0.27 (0.482)	1.25 (0.778)	1.43* (0.847)
Constant	9.36*** (1.152)	33.41*** (2.836)	50.38*** (3.968)
Adjusted $R^2$	0.22	0.34	0.23
Observations	287 (93)	287 (93)	287 (93)

*Notes:* The table entries are regression coefficients (b-values) from a Time-Series-Cross-Section-Analysis with panel-corrected standard errors in parentheses. The dependent variables are the salience of constitutive (CON) and policy (POL) European issues and the full (compound) salience of European issues (EU) in 14 Western European countries (as data for Luxembourg are missing in the Chapel Hill data, we omit this country from our analysis) for seven EP elections (1979 – 2009). The independent variables are centred for the analysis. \*  $p < 0.10$ , \*\*  $p < 0.05$ , \*\*\*  $p < 0.01$

Table A.5: Robustness check III: Main model controlled for time of EP election

	CON	POL	EU
Party position towards the EU (H1)	0.82* (0.458)	-2.49*** (0.614)	-1.78*** (0.646)
Intra-party dissent over EU (H2)	-0.75 (1.463)	1.18 (2.010)	0.49 (2.227)
Intra-party dissent over EU, curvilinear (H2)	0.04 (0.159)	0.01 (0.219)	0.05 (0.232)
Party system polarization over EU (H3)	0.81 (0.859)	-5.60*** (1.209)	-5.08*** (1.294)
Party system division over EU	-0.29 (0.553)	0.17 (0.847)	-0.04 (0.818)
EP election (control)	-1.05*** (0.371)	1.89*** (0.557)	0.89 (0.538)
Constant	24.06*** (1.900)	47.88*** (2.843)	71.69*** (2.790)
Adjusted $R^2$	0.18	0.20	0.24
Observations	401	401	401

*Notes:* The table entries are regression coefficients (b-values) from a Prais-Winsten regression correcting for panel-specific autocorrelation in error terms over one period (AR 1). Panel-corrected standard errors in parentheses. The dependent variables are the salience of constitutive (CON) and policy (POL) European issues and the full (compound) salience of European issues (EU) in 14 Western European countries (as data for Luxembourg are missing in the Chapel Hill data, we omit this country from our analysis) for seven EP elections (1979 – 2009). The independent variables are centred for the analysis. \*  $p < 0.10$ , \*\*  $p < 0.05$ , \*\*\*  $p < 0.01$

Table A.6: Robustness check IV: Main model controlled for step of European Integration

	CON	POL	EU
Party position towards the EU (H1)	0.83* (0.456)	-2.48*** (0.622)	-1.77*** (0.654)
Intra-party dissent over EU (H2)	-0.46 (1.399)	0.07 (1.966)	-0.33 (2.192)
Intra-party dissent over EU, curvilinear (H2)	0.03 (0.155)	0.09 (0.220)	0.11 (0.232)
Party system polarization over EU (H3)	0.92 (0.864)	-5.98*** (1.197)	-5.34*** (1.291)
Party system division over EU	-0.31 (0.535)	0.47 (0.831)	0.23 (0.834)
Step of integration (control)	-2.14*** (0.673)	2.56** (1.202)	0.60 (1.230)
Constant	23.15*** (1.510)	51.99*** (2.572)	74.76*** (2.627)
Adjusted $R^2$	0.18	0.19	0.24
Observations	401	401	401

*Notes:* see Table A.5

Table A.7: Robustness check V: Main model with modified dependent variables

	CON	POL	EU
Party position towards the EU (H1)	1.33** (0.534)	-1.96*** (0.638)	-1.76*** (0.657)
Intra-party dissent over EU (H2)	-0.07 (1.724)	-0.97 (1.818)	-0.61 (2.021)
Intra-party dissent over EU, curvilinear (H2)	0.01 (0.204)	0.21 (0.211)	0.14 (0.219)
Party system polarization over EU (H3)	1.53 (0.970)	-6.11*** (1.260)	-5.43*** (1.277)
Party system division over EU	-0.31 (0.534)	0.57 (0.727)	0.36 (0.738)
Constant	23.00*** (0.801)	58.25*** (1.202)	75.92*** (1.139)
Adjusted $R^2$	0.15	0.20	0.24
Observations	401	401	401

*Notes:* The table entries are regression coefficients (b-values) from a Prais-Winsten regression correcting for panel-specific autocorrelation in error terms over one period (AR 1). Panel-corrected standard errors in parentheses. The dependent variables are the salience of constitutive (CON) and policy (POL) European issues and the full (compound) salience of European issues (EU) in 14 Western European countries (as data for Luxembourg are missing in the Chapel Hill data, we omit this country from our analysis) for seven EP elections (1979 – 2009). The dependent variables are modified with the aim of understanding ‘European Single Market’ and ‘European Monetary Union’ quasi-sentences as constitutive issues. The independent variables are centred for the analysis. \*  $p < 0.10$ , \*\*  $p < 0.05$ , \*\*\*  $p < 0.01$

Table A.8: Robustness check VI: Main model with control for length of manifesto

	CON	POL	EU	CON	POL	EU	CON	POL	EU
EU party position (H1)	0.72 (0.445)	-2.45*** (0.642)	-1.82*** (0.661)	0.79 (0.478)	-2.66*** (0.647)	-1.97*** (0.668)	0.58 (0.511)	-2.22*** (0.633)	-1.71** (0.697)
Intra-party dissent (H2)	0.04 (1.380)	-1.11 (1.884)	-1.04 (2.034)	-0.00 (1.369)	-0.85 (1.862)	-0.82 (2.076)	0.49 (1.371)	-1.54 (1.864)	-1.02 (2.108)
Intra-party dissent <sup>2</sup> (H2)	-0.03 (0.160)	0.20 (0.219)	0.17 (0.221)	-0.03 (0.157)	0.19 (0.219)	0.16 (0.229)	-0.06 (0.157)	0.24 (0.219)	0.18 (0.232)
EU party system polarization (H3)	0.73 (0.867)	-6.30*** (1.231)	-5.90*** (1.274)	0.54 (0.894)	-5.50*** (1.248)	-5.21*** (1.248)	0.42 (0.874)	-5.38*** (1.264)	-5.16*** (1.284)
EU party system division	-0.73 (0.512)	1.01 (0.740)	0.34 (0.748)	-0.66 (0.522)	0.70 (0.746)	0.12 (0.750)	-0.55 (0.515)	0.59 (0.735)	0.10 (0.756)
<i>Manifesto length</i>	-0.01*** (0.001)	-0.00 (0.002)	-0.01** (0.002)	-0.01*** (0.001)	-0.00 (0.002)	-0.01** (0.002)	-0.00*** (0.001)	-0.00 (0.002)	-0.01** (0.002)
Public ambivalence				0.08 (0.076)	-0.41*** (0.100)	-0.33*** (0.115)	0.08 (0.078)	-0.39*** (0.099)	-0.31*** (0.115)
Government party				-0.03 (1.105)	0.43 (1.426)	0.70 (1.516)	-0.15 (1.022)	0.71 (1.406)	0.79 (1.539)
Vote share				0.04 (0.059)	-0.12 (0.099)	-0.10 (0.106)	0.03 (0.065)	-0.13 (0.111)	-0.11 (0.111)
Party family: green							-5.42*** (1.691)	5.40 (3.298)	0.06 (3.318)
Party family: regional							2.85 (2.783)	-3.83 (3.684)	-1.01 (4.188)
Party family: nationalist							8.70* (4.962)	-16.45*** (4.810)	-7.44 (6.364)
Constant	21.38*** (1.023)	56.94*** (1.440)	78.20*** (1.397)	18.92*** (2.171)	68.16*** (2.921)	87.03*** (2.963)	18.73*** (2.170)	68.73*** (3.248)	87.38*** (3.115)
Adjusted $R^2$	0.20	0.18	0.26	0.20	0.20	0.27	0.22	0.22	0.27
Observations	401	401	401	401	401	401	401	401	401

*Notes:* The table entries are regression coefficients (b-values) from a Prais-Winsten regression correcting for panel-specific autocorrelation in error terms over one period (AR 1). Panel-corrected standard errors in parentheses. The dependent variables are the salience of constitutive (CON) and policy (POL) European issues and the full (compound) salience of European issues (EU) in 14 Western European countries (as data for Luxembourg is missing in the Chapel Hill data, we omit this country from our analysis) for seven EP elections (1979 – 2009). The independent variables are centred for the analysis. \*  $p < 0.10$ , \*\*  $p < 0.05$ , \*\*\*  $p < 0.01$